



WHV INSTITUTE  
THE COTTAGE AT THE VILLAGE  
WEXNER HERITAGE HOUSE  
CREEKSIDE AT THE VILLAGE  
BEXLEY HERITAGE APARTMENTS  
WEXNER HERITAGE VILLAGE  
HERITAGE TOWER  
HOME HEALTH & WELLNESS  
POLSTER MEDICAL CENTER  
DIALYSIS PAVILION  
ZUSMAN HOSPICE  
REHABILITATION CENTER  
SHALOM HOUSE, INC.

**2011 Wexner Heritage Village Board of Directors****Executive Committee:**

Randall S. Arndt, *Chair*  
 Eric Wasserstrom, *Vice Chair & Treasurer*  
 Paul Guth, *Vice Chair*  
 Joy Gonsiorowski, *Secretary*  
 James A. Bowman, *Immediate Past Chair & Lifetime Director*  
 Irving Barkan, *Lifetime Director*  
 Geri Ellman  
 Ted Fisher, *Lifetime Director*  
 Dr. Kurt Malkoff, *Lifetime Director*

**Directors:**

Dr. Steve Allen  
 Michael Bernstein  
 Dr. Andrew Bokor  
 Gigi Fried  
 Jason George, *Assistant Treasurer*  
 Andrew Grossman  
 Dr. Mark Levy  
 Carrie Madison  
 Laurie Rackoff  
 Gary Rosenstein  
 Keith Schuss  
 Ira Sharfin  
 Mark Ungar  
 Dr. Eric Zidel

**By Virtue:**

Emily Hindin, *Auxiliary Co-President*  
 Dr. Esther Chipps, *Shalom House Chair*  
 Rabbi Cary Kozberg, *Board of Rabbis Designee*

**WHV Foundation Board of Directors**

James A. Bowman, *Chair*  
 Dr. Kurt Malkoff, *Vice Chair*  
 David Rosen, *President*  
 David Driver, *Treasurer*  
 Amy Wharton, *Secretary*  
 Geri Ellman  
 Sam Fried  
 Alan Weiler  
 Randall S. Arndt (by virtue)

**Shalom House Board of Directors**

Dr. Esther Chipps, *Chair*  
 Susan Fredman, *Secretary*  
 Mark Ungar, *Treasurer*  
 Sarah Blumenfeld  
 Geri Ellman  
 Ellen Glimcher  
 Ron Greenbaum  
 Mildred Blumenfeld (by virtue)

**WHV Executive Staff**

David Rosen, *President & CEO*  
 David Driver, *SVP Finance & New Business Development*  
 Chris Christian, *SVP Operations*  
 Nisha Hammel, *SVP Home Health & Hospice*  
 Cheryl Howard, *SVP Operations*  
 Rabbi Cary Kozberg, *Director of Spiritual Life*  
 Amy Wharton, *SVP Development & Marketing*

On the strong foundation of 60 years of serving the Central Ohio community, Wexner Heritage Village continued to grow and build for future generations in 2011. In the face of a challenging economy, we remained unwavering in our commitment to provide “best in practice” care to our clients and families. Meanwhile, we also took steps to reinforce our future viability and assure our financial standing.

*The Campaign to Revolutionize Care* was launched in 2011 to enlist the partnership of our community to realize bold new plans that fortify our future. Thanks to the participation of each and every individual who contributed money, time, and leadership to Wexner Heritage Village in 2011, we reached the \$2.5 million mark toward our \$10 million campaign goal. I am pleased to share some of the outcomes you made possible:

- We celebrated the opening of a brand new Alzheimer’s/dementia assisted living residence and a state-of-the-art dialysis center.
- The WHV Institute was founded to serve as a national example of excellence and innovation in training, education, and research.
- Forward-looking alliances were forged with respected partners such as American Renal Associates, OhioHealth, and Huntington Bank.
- Zusman Hospice (marking its 10th year) and Home Health & Wellness (in its 2nd year) experienced strong growth in number of clients served, paving the way for expansion of services in 2012.

As we implement ways to remain vital and progressive in this changing healthcare landscape, two areas that will require significant financial investment in 2012 – and will influence our work for many years to come – are advances in technology and specialized care. These developments show the promise of bringing an even higher standard of care to our patients and families, and lay the groundwork for future growth.

Looking ahead, I see a future that will continue to demand vision and innovation, a willingness to embrace change, and the investment of our community. Thank you for the confidence you have placed in Wexner Heritage Village. We intend to exceed your expectations and uphold your trust and support.

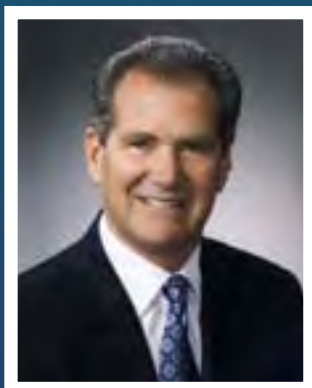
To your health,



David T. Rosen  
 President & CEO



# WITH OUR APPRECIATION



Randall S. Arndt  
 Chair, WHV Board of Directors  
 2008 - 2011

The board and staff of Wexner Heritage Village join me in extending a chorus of gratitude to Randy Arndt for his exemplary service as board chair for the past three years. Randy has been instrumental in guiding Wexner Heritage Village through a pivotal period of change and growth that required a visionary and steadfast leader. Randy has certainly demonstrated these qualities, and much more. I am pleased to share that Randy will remain on the board as a newly-elected lifetime director.

We thank Randy for his service and extend a warm welcome to incoming board chair Eric Wasserstrom, who will ably lead Wexner Heritage Village through a new era of growth and service.

David T. Rosen  
 President & CEO

# Wexner Heritage Village

## Marking 60 Years of Caring, Trust and Excellence at "The Village that You Built"

In June, we marked our 60th anniversary with a celebration recognizing the dedicated people who have made possible a legacy of excellence at Wexner Heritage Village.

"Given the community's generous, heartfelt support over six decades, Wexner Heritage Village truly is 'the village that you built,' because without you – the community – Wexner Heritage Village would not be what it is today: a shining example of caring for people in need," said David Rosen, President and CEO.

In addition, the anniversary celebration introduced our five-year, \$10 million *Campaign to Revolutionize Care at Wexner Heritage Village*, which will underwrite plans to expand programs and services.

A video premiered at the event, which commemorates our 60 years of accomplishments through conversations with leadership, residents, employees, and benefactor and former board member Leslie H. Wexner. The video also outlines campaign details, including opportunities for donor support; watch it online at [whv.org](http://whv.org).



"We wholeheartedly thank all who gave of their time and resources to make the celebration meaningful, not just for Wexner Heritage Village but for the families, individuals, and foundation and corporate partners who help make this organization all that it is," David Rosen said at the event. "We look forward to the opportunities the next 60 years will bring, and we welcome the community's support of our vision."



Recording artist Roslyn Kind – 'kid sister' of Barbra Streisand – marked the WHV 60th anniversary with a festive reception and performance

Prior to her performance, Kind participated in a musical activity with residents at Wexner Heritage House. During her visit, she played the tambourine and sang along with Rabbi Cary Kozberg before sharing encouraging words – and hugs – with each resident. Her presence generated smiles and applause.

"Singing with the residents brought back memories of time spent singing for – and with – my mom, who suffered from Alzheimer's in her final years," Kind said. "Music and singing brought her so much joy and transcended what had become a lack in her communication skills. It brought tears to my eyes as I watched the residents engaging in song."

"I was very impressed with the tender loving care given to the residents by all the people I met, including the nursing staff, the administrators and everyone at Wexner Heritage Village," Kind said. "Their deep concern, gentle attention, and open hearts were very evident."

## A Special Thanks to Our 60th Anniversary Circle of Life Patrons

- Randy Arndt and Jeff Baker
- Ruth and Irving Barkan
- Judy and Allan Blair
- Tracey and Jim Bowman
- Marilyn and Stuart Cole
- Sylvia and Murray Ebner
- Geri Ellman
- Judy and Ted Fisher
- Shari and Jason George
- DeeDee and Herbert Glimcher
- Jack Gold and Jeff Griss
- Joy and Mike Gonsiorowski
- Pat and Eddie Grayson
- Shylee and Andrew Grossman
- Sherry Magnuson and Paul Guth
- Linda Katz and Jerry Hackman
- Cheryl and Scott Howard
- Marsha Hurwitz
- Phyllis and Ira Ives
- Cheryl and Jackie Jacobs
- Holly and Brad Kastan
- Carrie and Andy Madison
- Leslie and Kurt Malkoff
- Sunny and Mark Masser
- Karen and Jon Meyer
- OPOC.us
- Plante & Moran, PLLC
- Joyce Politi
- Judy Politi
- Laurie and Paul Rackoff
- Linda and Stan Robins
- Gayle and David Rosen
- Paula and Gary Rosenstein
- The Sharfin family
- Ruth and Joe Sniderman
- Aurelia and Ernest Stern
- Sadie and Seyman Stern
- Esther Chipps and Steven Teich
- Marcy and Mark Ungar
- Joan Wallick
- Donna and Rodney Wasserstrom
- Jennifer and Eric Wasserstrom
- Rose and Herb Weyl
- Blanche Young
- Pamela and Jonathan Young
- The Zidel family
- Leonore Zusman



<p><b>1951</b> Columbus Jewish Home for the Aged</p>	<p><b>1979</b> Heritage Tower</p>	<p><b>1990</b> Victor Weinstein Shalom House</p>	<p><b>1992</b> Shalom House South</p>	<p><b>1994</b> Bexley Heritage Apartments</p>	<p><b>2005</b> Creekside at the Village</p>	<p><b>2007</b> Polster Medical Center</p>	<p><b>2011</b> The Cottage</p>
<p><b>1961 &amp; 1990</b> Heritage House Wexner Heritage House Resler, Skiken, &amp; Yassonoff Neighborhoods</p>	<p><b>1990</b> Rehabilitation Center Ebner-Ruben Transitional Care Unit Nulis &amp; Morgan Neighborhoods</p>	<p><b>2001 &amp; 2005</b> Zusman Hospice Zusman House</p>	<p><b>2006</b> Village Shalom Apartments</p>	<p><b>2010</b> Home Health &amp; Wellness</p>	<p><b>2012</b> WHV Institute WHV Community Park</p>		

# NEW: The Cottage

## Assisted Living for Individuals with Alzheimer's and Dementia

A new 10-unit residence – The Cottage – replaced the unoccupied west wing of Wexner Heritage House in the fall of 2011. The Cottage offers a new assisted living option uniquely designed to support the independence of individuals living with dementia-related conditions in a safe, home-like atmosphere, with a staff of Certified Dementia Practitioners.

“It was an exciting time, as we watched what was unused and unoccupied space transform into a beautiful new assisted living residence accommodating an additional 10 residents on our campus,” said WHV Board Chairman Randy Arndt.

A unique centerpiece of The Cottage is a landscaped courtyard where residents will be able to enjoy the outdoors and visit with family and friends.

“The Cottage promotes independence through a healthy lifestyle and by offering residents choices in their daily routine,” The Cottage Executive Director Sarah Kaminski said. “Residents’ interests and abilities can directly influence how they spend their day, as well as confirm their feeling of having control over their care and experience.”

“Opening The Cottage is a prime example of our commitment to enhancing the well-being of seniors in our community,” said David Rosen. “This new residence – and new approach to caring for seniors with Alzheimer's and dementia – carries with it the organization's 60-year tradition of exceptional care.”

Construction of The Cottage was made possible through the generosity of donors to Wexner Heritage Village's *Campaign to Revolutionize Care*.



### The Cottage Garden Takes Shape

Support and guidance from Kurt and Leslie Malkoff made possible a beautiful 4,000 square foot garden and focal point of The Cottage, where residents can enjoy outdoor independence in a secured and therapeutic environment.

“To love someone is to learn the song that is in her heart and sing it to her when she has forgotten it.”

~unknown

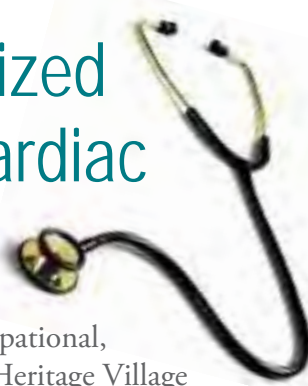
### A time for tearing down and a time for building up

To make way for The Cottage, the unoccupied west wing of Wexner Heritage House was demolished in 2011. Rabbi Cary Kozberg and a host of WHV staff marked the commencement of the demolition with a blessing, followed by a series of ceremonial sledgehammer blows. See the video online at [youtube.com/whv1951](http://youtube.com/whv1951).



# Rehabilitation

## Expanding Specialized Respiratory and Cardiac Care Services



Over 900 patients received physical, occupational, and speech therapy through the Wexner Heritage Village Rehabilitation Center in 2011. Our rehab services are highly regarded by the community for their excellence in helping patients get back home safely and at their highest level of independence.

Looking ahead, our rehabilitation team is now laying the foundation for expanded specialized respiratory and cardiac services in the coming year. Thanks to a grant from the Columbus Jewish Foundation, implementation of specialized respiratory services is currently underway to improve medical outcomes and reduce hospital admissions and readmissions.

An on-site respiratory therapist will lead the respiratory care team and develop this program, which will include the addition of new and modernized equipment; a sophisticated training program that will teach WHV staff to assess, identify, and treat symptoms associated with respiratory diseases; and community education to help clients, potential clients, and their families recognize symptoms and to also provide resources to assist them.



# Home Health & Wellness

## Expanding Services and Growing in Market Share

2011 marked significant growth for our Home Health & Wellness division. Our number of clients served more than tripled, and certification was earned by the State of Ohio as a PASSPORT provider.

A full complement of home-based services gained momentum in the community and received high marks from clients and families. In addition to traditional personal care assistance, Home Health & Wellness is leading the way with care coordination, health education and medication management, disease-specific care and expertise – including Alzheimer’s/dementia, home management and companionship, social work and spiritual support, and much more.

Wexner Heritage Village recognizes that the customer of the future and his or her family caregiver will look for simplified coordination of care and services, and look to connect with an organization they trust and that can provide for their holistic care needs. As such, the consumer will see in the coming year further expansion of our care management services and the advancement of technology that enhances safety and independence.



*“The goal in hospice is to help people live, as fully as they can for as long as they will. Hospice is about living now, and it’s a good reminder to all of us that living now is really the only time we know we have for sure.”*

*Dr. Jennifer Hirsh  
Medical Director  
Zusman Hospice*

# Zusman Hospice

## Marking 10 Years of Service and Forming an Advisory Board

Zusman Hospice marked its 10th anniversary with a Community Kaddish event at Wexner Heritage House – in conjunction with National Hospice Month. More than 150 guests attended, including Leonore Zusman and daughter Marilyn Cole, representing the Zusman family, founding benefactors of Zusman Hospice. The event included an opportunity for guests to create memorial tiles that will become part of a commemorative mosaic mural at Zusman House.

Over the past 10 years, Zusman Hospice has evolved and grown to become an invaluable asset to the Central Ohio community. Hospice services are provided to terminally ill patients in their homes, assisted living facilities, nursing homes and at Zusman House on the Wexner Heritage Village campus.

*Leonore Zusman and Marilyn Cole*



Since its founding in 2001, Zusman Hospice has served thousands of patients, as well as a network of family and friends who benefit from ongoing grief support, community education and special outreach programs.

To continue the growth of Zusman Hospice in Central Ohio, a new advisory board formed in 2011. The board provides guidance on maintaining Zusman Hospice’s standards for operations and quality. Members are:

Keith Schuss – Chair; Dr. David Cohn, Dr. Rob Crane, Andrew Grossman, Hannah Pirwitz, Joyce Politi, Ruth Sniderman, and Dr. Eric Zidel.

Wexner Heritage Village staff members also serving on the advisory board are:

David Rosen, President and CEO; Dr. Jennifer Hirsh, Medical Director, Zusman Hospice; Nisha Hammel, SVP, Home Health & Hospice; Rabbi Sharon Mars, Assistant Director, Spiritual Life; and Sue Ashcraft, Executive Director, Zusman Hospice.



## Saul & Sonia Modes Schottenstein Dialysis Pavilion

Sonia Modes Schottenstein, her family, and friends joined President & CEO David Rosen at a private ribbon-cutting ceremony in December 2011 for the Saul & Sonia Modes Schottenstein Dialysis Pavilion – a new dialysis center made possible in part by a generous gift from Sonia Modes Schottenstein.

The dialysis center, scheduled to open in early 2012 at Wexner Heritage Village, will be housed in renovated space designated as the Kidney Center of Bexley – a state-of-the-art 15-station outpatient dialysis treatment suite, and one of the largest in central Ohio. This new facility is the result of a partnership between Wexner Heritage Village and American Renal Associates. The center will provide care to those residing on the WHV campus, as well as in the community.

At the ribbon-cutting ceremony, Sonia shared that her family – and particularly her brother who is a dialysis patient – were a tremendous source of inspiration for making the dialysis center a reality:

“I knew I had to do anything I could to help make treatment easier for dialysis patients,” she said. “That’s the least I can do. I can’t tell you how good I feel that I am helping people.”

Sonia Modes Schottenstein has had a long relationship with Wexner Heritage Village. Her late husband, Saul, contributed to the building of Wexner Heritage House, and she has brought joy to residents here for more than 50 years with her musical performances.



# WHV Institute

## A Hub for Training, Education, and Research

Set to launch in 2012, the WHV Institute will offer training and research programs that have broad application to those practicing in the field of elder care: physicians, healthcare professionals, medical institutions, nursing schools, elder care program administrators, and other local, national, and international partners.

The WHV Institute will serve as a progressive, evidence-based education and learning facility that will disseminate and put into practice emerging trends and breakthroughs in the care of older adults through its program offerings, helping to position Wexner Heritage Village as a national example of excellence and innovation. Programs will include faculty education modules, continuing education courses, lectures, and workshops.

The purpose of the WHV Institute is to:

- Improve the quality of life for older adults by training healthcare professionals in the latest, most effective care methods.
- Establish links with academic institutions that enrich opportunities for research and training.
- Promote the incorporation of newly-learned knowledge and skills into conventional senior care practices.

The foundational and future support of the WHV Institute depends in large part upon the generosity of donors. Leading the way is Huntington Bank, which has provided \$100,000 in seed funding to establish a state-of-the-art training center. Scheduled to open in 2012, the training center will feature modern conference space as well as a medical simulation area for clinical and diagnostic training.



“The WHV Institute will leverage the strengths of Wexner Heritage Village by focusing on advances in technology, research, and evidence-based, person-centered care. As well, it will serve as a forum to promote education for staff, medical professionals, and caregivers in the community.”

Francesca Bryan  
RN, BSN, CCRN  
Director, WHV Institute

# Volunteers Make the Difference

Last year, Wexner Heritage House and Zusman Hospice benefitted from over 7,000 hours of volunteer service from hundreds of dedicated helpers, resulting in a savings of over \$130,000 to Wexner Heritage Village. Some highlights of volunteer activity around our campus include:

- Kemba Credit Union and Circle K at Capital University beautified the hospice patio by weeding and replanting the green space.
- Volunteers continued to provide quality-of-life assistance to our residents and patients wherever they were needed. Administrative volunteers also assisted by filing, performing database entry, handling mail, making phone calls, and other helpful tasks.
- Volunteers from the Columbus Jewish Federation lent their support through the efforts of the P2K participants, the Young Adult Division and the annual Mitzvah Day program. Congregation Beth Tikvah selected us as their Mitzvah of the Month, and OSU Hillel planned a Junior/Senior Prom as a fun way for students to connect with our residents.

Interested in volunteering? Contact our volunteer manager by calling (614) 231-4900 or visit the website at whv.org.



## Jewish Chaplains Honor Rabbi's Work

In recognition and appreciation of the contributions he has made to our organization and to the profession of Jewish chaplaincy, Rabbi Cary Kozberg, Director of Spiritual Life, was honored by the National Association of Jewish Chaplains (NAJC) at the group's annual conference.

The NAJC said in an announcement to its members, "Cary demonstrates what is best about our profession, and has distinguished himself in all aspects of the rabbinate." For more than 20 years Rabbi Kozberg has honorably served Wexner Heritage Village and thousands of patients, residents, and families, providing them with caring support and guidance.



## Pastoral Care Breakfast Serves Interfaith Chaplains

In recognition of Pastoral Care Month, our Spiritual Life department organized its first Pastoral Care Appreciation Breakfast, hosting more than 40 rabbis, pastors, priests, and other clergy from around Ohio. At the breakfast, Rabbi Julie Schwartz of Hebrew Union College in Cincinnati spoke on "The Use of Storytelling in Pastoral Care."



## Generous Volunteers Expand Jewish Spiritual Outreach

In the *Nadav* Spiritual Program – *Nadav* means "generous" in Hebrew – Rabbi Sharon Mars trained 13 volunteers to become para-chaplains, who are now visiting Jewish residents in nine extended care facilities throughout the Columbus area. The *Nadav* Spiritual Volunteers give of their time, energy and souls to Jewish seniors who might otherwise feel acutely isolated from their Jewish community, celebrating holidays together, meeting their families, and building spiritual companionship. As more and more Jewish seniors are being identified in Columbus, *Nadav* plans to expand its reach to embrace even more seniors in need of spiritual connection.



# WHV Banks on Convenience with New Huntington Branch

Huntington Bank opened a new branch on the campus of Wexner Heritage Village in 2011, offering full-service banking for residents and WHV employees.

"Wexner Heritage Village has a fantastic reputation in the community for providing quality health, housing, spiritual, and supportive services to their clients. We couldn't be more pleased to partner with such an outstanding organization," said Jon Greenwood, Huntington's retail area manager.



The Huntington National Bank, Member FDIC. and Huntington are federally registered service marks of Huntington Bancshares Incorporated.



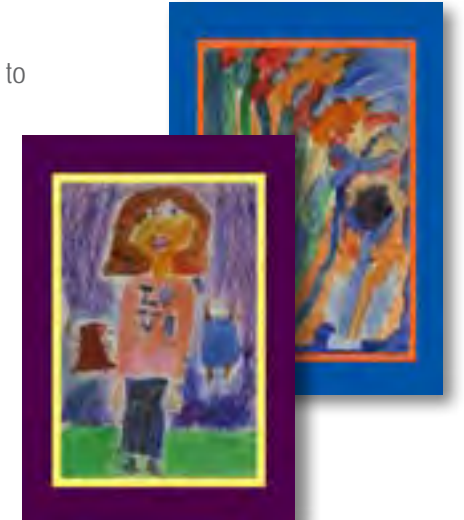
# Shalom House Residents Get a New Set of Wheels

Support from the Barbara and Bill Bonner Family Foundation, along with additional private donations, made possible the purchase of a new van to transport residents who use wheelchairs to recreational and community activities, medical appointments, and other outings.

# Columbus Jewish Day School Links WHV Residents with Students

The CJDS Jewish Student/Jewish Senior Holiday Link Program aims to strengthen bonds between students and Wexner Heritage Village residents through intergenerational holiday activities. Through their connections with residents, students gain insight into values and traditions, along with opportunities to practice social responsibility.

Activities in this new program – made possible by a grant from the Columbus Jewish Foundation – included student interviews with World War II and Korean War veterans on Veteran's Day at Creekside at the Village, and creating and displaying artwork in celebration of Hanukkah.



# Campaign to Revolutionize Care

## Year One Progress Report



Contributions ranging from \$10 to over \$500,000 totaled \$2.5 million — 25% of our campaign goal

In January 2011, we announced the beginning of the most ambitious fundraising initiative for Wexner Heritage Village in many years. The community's response in this first year of our five-year \$10 million fundraising campaign has been deeply gratifying.

Contributions ranging from \$10 to over \$500,000 totaled \$2.5 million—25% of our campaign goal. Lead gifts have made advancements possible in a number of critical areas in 2011. We are pleased to share a few of the highlights, along with our appreciation:

- The Saul & Sonia Modes Schottenstein Dialysis Pavilion, housing the new Kidney Center of Bexley, was made possible by the vision and generosity of Sonia Modes Schottenstein.
- The Cottage welcomed its first residents, thanks to lead gifts from Kurt and Leslie Malkoff, the Lewin Family/Hamilton Parker Company Foundation, and the Columbus Jewish Foundation, among others.
- Huntington Bank funded the construction of the new WHV Institute Training Center, underway now, and opened a bank branch on our campus.
- Pamela and Ira Sharfin, along with several other families who have been touched by the hospice experience, led the way with major support to enable the expansion of palliative care services at Zusman Hospice.
- The Columbus Jewish Federation and Columbus Jewish Foundation provided key support to drive the progress of our home-based care and wellness services.

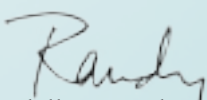
- Geri and the late Ed Ellman recognized the importance of bolstering unrestricted support and inspired other families to join them in directing their campaign gifts to the Wexner Heritage Village Greatest Needs Fund.

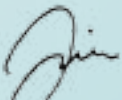
As co-chairs of the campaign, we experienced the great pleasure of making our individual campaign gifts in 2011. Moreover, it has been a privilege to work with so many community members who share our commitment to the strategic vision of Wexner Heritage Village and who recognize the significance of *investing* in a strong future for the organization.

As we shared at the launch of this campaign, the demand for our services has never been greater and there is much work to be done. A wide range of rewarding giving and naming opportunities are available for those who are interested, and much more information is available on the Wexner Heritage Village website at whv.org.

Feel free to contact us, David Rosen, or SVP of Development Amy Wharton at (614) 559-0320 or [awharton@whv.org](mailto:awharton@whv.org) for more information or if we can be helpful in any way.

We are humbled by and grateful for the number of individuals who have joined us early on in this journey, and welcome all who wish to join us in the future. Every gift makes a difference, and it is only together that we will realize the organization's goals. The possibilities of our collective efforts are far reaching. The rewards... unquestionably beyond measure.

  
Randy Arndt  
Campaign Co-Chair

  
James A. Bowman  
Campaign Co-Chair

We gratefully acknowledge the following donors for their generous contributions to the Wexner Heritage Village family of services in 2011

# THANK YOU

### Visionary

Columbus Jewish Federation  
Sonia Modes Schottenstein

### Chair's Circle

Columbus Jewish Foundation  
Geraldine and Edwin\* Ellman  
Huntington Bank

### Builder

Samuel Baker  
Gigi and Sam Fried  
Thomas and Merilynn Kaplin Family  
Lewin Family/Hamilton Parker  
Company Foundation  
Dr. Kurt and Leslie Malkoff  
Morrison Senior Living  
OPOC.us  
Pamela and Ira Sharfin

### Founder

Allene N. Gilman Charitable Trust--  
Neil M. Moss, Trustee  
Randall Arndt and Jeffrey Baker  
Jim and Tracey Bowman  
Jason and Shari George  
Joy and Michael Gonsiorowski  
Meyer Family  
David and Gayle Rosen  
Melvin Schottenstein Family  
The Wasserstrom Foundation  
Mr. and Mrs. Mark Ungar  
Joan Wallick

### President's Circle

Barbara & Bill Bonner  
Family Foundation  
Irvin Cohen\* and Family  
Mr. and Mrs. Chris Christian  
Mr. and Mrs. David Driver  
Peggy Freed  
Mike and Nisha Hammel  
Cheryl and Scott Howard  
Jane F. Goodman Trust\*  
Pat and Elliott Grayson  
Rabbi and Mrs. Cary Kozberg  
Nutis Foundation, Inc.  
Jennifer and Eric Wasserstrom  
Amy Wharton

### Leader

Jack Gold  
Nacht Hilbrands Rackoff  
Families Fund  
PharMerica Corporation  
Mr. and Mrs. Julio Russ

### Guardian

Mr. and Mrs. Irving Barkan  
Glimcher Properties  
Dr. and Mrs. Bruce Meyer  
Mr. and Mrs. Jon Meyer  
Schoedinger Funeral Service  
Dr. Steven Teich  
and Dr. Esther Chipps  
The Columbus Foundation  
Missy and Bob Weiler

### Chai Circle

Mr. and Mrs. Richard Eisenstein  
Ellen Glimcher  
Mr. and Mrs. Michael Goldberg  
Lt. Col. and Mrs. George Liotis  
PNC Foundation  
Gary and Paula Rosenstein  
Mr. and Mrs. Ernest Stern

### Sustainer

Dr. and Mrs. Allan Blair  
Florence Cabakoff  
Mr. and Mrs. Jules Garel  
DeeDee and Herb Glimcher  
Mr. and Mrs. Eli Goldach  
Andrew and Shylee Grossman  
Janet Herbst  
James and Joyce Jacobs  
Snyder Family Fund of Jewish Family  
& Children's Services  
James Levine and Keri Levine Ferencz  
Dr. and Mrs. Mark Levy  
Mr. and Mrs. Thomas Lurie  
Dr. and Mrs. Terry Meyer  
National Hospice Foundation  
Linda and Jake Rosenzweig  
Mr. and Mrs. Richard Salinsky  
Mr. and Mrs. Michael Singer  
Morris and Fannie Skilken  
Family Foundation  
Sadie and Seyman Stern  
Harry Taubman  
Mr. and Mrs. Alan Weiler  
Mr. and Mrs. Steve Weiler  
Wexner Heritage Village Auxiliary  
Blanche Young  
Dr. and Mrs. Daniel Zidel

\* of blessed memory

## Patron

Mr. and Mrs. Alan Acker  
Joseph Alutto and Carol Newcomb  
Donna Arledge  
Alex and Tatyana Arsh  
Austin Babrow  
David Bilenko  
Terry Bornstein  
Mr. and Mrs. Marvin Brown  
Dorothy Byard  
Neil Chakoff  
Diane Chang  
Eileen Cohen  
Viorica Cohn  
Sally Crane  
Vivien Elmslie  
Exterior Materials  
Gail Ferber  
Harold Flox  
Dr. and Mrs. Sanford Glazer  
Mr. and Mrs. James Goldsmith  
Dr. Arnold Good and Lisa Newmark  
Sheena Hankins  
Invest in Others Charitable Foundation  
Mr. and Mrs. Gordon Keit  
Michael Kelley  
Bronislava Khidekel  
Rachel Khozin  
Pam and Stephen Lamb  
Richard Mathes  
Mr. and Mrs. Craig Nordlund  
Gertrude Odenheimer  
Plante & Moran, PLLC  
Mildred Rosenberger  
Estate of Joan Rosenblum\*  
Dr. and Mrs. Wesley Rosenthal  
Mr. and Mrs. Ralph Rothschild  
Florine Ruben  
Mr. and Mrs. Scott Schiff  
Mr. and Mrs. Keith Schuss  
Mr. and Mrs. Bernie Senser  
Dr. and Mrs. Rob Steiner  
Mr. and Mrs. Ron Sykes  
Sheila and Martin Torch  
Mr. and Mrs. Mark Weinstein  
Dr. and Mrs. Adam Weiser  
Norma Wells  
Mr. and Mrs. Herb Weyl  
Mr. and Mrs. Steven Weyl  
Mr. and Mrs. Mahesh Wijegunawardana  
Mr. and Mrs. Mark Yale  
Mr. and Mrs. Jonathan Young

## Contributor

Baker & Hostetler LLP  
Charlotte Beckman  
Dr. and Mrs. Jerry Benis  
Mr. and Mrs. Steve Bills  
Mr. and Mrs. Ted Blumenfeld  
Mr. and Mrs. William Bluth  
Mr. and Mrs. Anselmo Bondulich  
Mr. and Mrs. Jack Burns

Mr. and Mrs. Stuart Cole  
Crosby's Drugs, Inc.  
Dr. and Mrs. Jules Duga  
Mr. and Mrs. Murray Ebner  
Anita Eisenstein  
Epstein Memorial Chapel  
David and Joan Epstein  
and Morton Epstein  
Mr. and Mrs. Ted Fisher  
Mr. and Mrs. Thomas Fisher  
Dr. and Mrs. Sylvan Frank  
Wendy Galan  
Dr. and Mrs. William Gilbert  
Richard Gillilan  
Bernard Glasner  
Sheldon Gleisser  
Harriet Gold  
Dr. Jack Gold and Jeff Griss  
Paul Guth and Dr. Sherry Magnuson  
Jerome Hackman and Linda Katz  
Dr. and Mrs. George Harding  
Audrey Harris  
**Michael Hershfield**  
Dr. and Mrs. Robert Hershfield  
Dr. and Mrs. Marc Hollander  
IBM International Foundation  
Phyllis and Ira Ives  
Mr. and Mrs. Jackie Jacobs  
Lillian Kanter\*  
Mr. and Mrs. Brad Kastan  
Jan Klein  
Harriet Korn  
Melodee Kornacker  
Florence Leviton  
Mr. and Mrs. Gregg Levy  
Mr. and Mrs. Irvin Lichtenstein  
Carrie and Andrew Madison  
Manley Deas Kochalski LLC  
Mr. and Mrs. Craig Marshall  
Mr. and Mrs. Mark Masser  
Matrix, Inc.  
Marci Meizlish  
Sandra Mendel Furman  
Mr. and Mrs. James Nowacki  
Mr. and Mrs. Richard Pawliger  
Mr. and Mrs. Jason Persan  
Pet People Stores  
Mr. and Mrs. Ralph Pinto  
Joyce Politi  
Judy Politi  
Mr. and Mrs. Paul Rackoff  
Alan and Carol Radnor  
Helen Rehn  
Mr. and Mrs. Stanton Robins  
Edith Rosenberg  
Irvin Rubin  
Estate of Michael Saks\*  
Shelley Samuels  
M.C. Santoyo-Stein  
Charles Schottenstein  
Mr. and Mrs. Jay Schottenstein  
Mr. and Mrs. Richard Segal  
Jeanette Seiferas

Elise Shapiro  
Mr. and Mrs. Charles Shenk  
Dr. and Mrs. Mark Siegal  
Earl Smith  
Mr. and Mrs. Joe Sniderman  
Gloria Thomas  
Agusta Turner  
Mr. and Mrs. John Urbancik  
Diane Warren  
Mr. and Mrs. Rodney Wasserstrom  
Mr. and Mrs. Larry Willen  
Dr. and Mrs. Eric Zidel

## Friend

Mr. and Mrs. David Abraham  
Vandana Agrawal  
Laila Almeida  
Mr. and Mrs. Yuri Altman  
Geri Alweiss  
Mr. and Mrs. Richard Aumann  
Betty Baggett  
Charlene Ballinger  
Maxine and James Bally  
Mr. and Mrs. Donald Barger  
Joyce Behner  
Mr. and Mrs. Albert Beim  
Mr. and Mrs. Michael Benis  
Roger and Madalyn Benjamin  
Rabbi Harold and Beth Berman  
Joann Blalock  
Mr. and Mrs. Larry Blazar  
Mr. and Mrs. Kenneth Bless  
Ella Mae Blue  
Mr. and Mrs. Bert Bogner  
Michael Bonzagni and Ann Thomas  
Shirley Boster  
Charles Brandt  
Dr. and Mrs. David Brandt  
Cheryl Brickman  
Audrey Brownstein  
Mr. and Mrs. Barry Brownstein  
Mr. and Mrs. Herbert Brownstein  
Helen Bruce  
Brucker-Kishler Funeral Home, Inc.  
Mr. and Mrs. Donald Burke  
Mr. and Mrs. Rudolph Burney  
Mr. and Mrs. Klaus Busam  
William Carnes  
William Cherny  
Larry and Barbara Childrey  
Mr. and Mrs. Chalmers Coe  
Columbus Department of Public Safety  
Congregation Tifereth Israel  
Cox's Mills United Methodist Church  
Mr. and Mrs. John Crawford  
Carla Cuadra  
Lindsey D'Andrea  
Mr. and Mrs. Eric D'Silva  
Yvonne Daniels  
Loretta Daugherty  
Miriam and Marshall David  
Clara Davidson  
Mr. and Mrs. Michael Demetriou

Johanne Desloges  
Lilly Deutsch  
Mr. and Mrs. Jon Diamond  
Digitas  
David Doty  
Nancy Dozier  
Mr. and Mrs. Darrell Driver  
Mr. and Mrs. Dan Dunleavy  
Beverly Durthaler  
Leo Dworkin  
Darin Easley  
Keith Edmunds  
Margery Edwards  
Mr. and Mrs. David Eisenstein  
Mr. and Mrs. Jack Engle  
Ernie's Automotive Service Inc  
Mr. and Mrs. Jason Ewell  
Mark Feldstein  
Peggy Ferber  
Mr. and Mrs. Trevor Ferger  
Martin Feuer  
Mr. and Mrs. Michael Feuer  
Scott Feuer  
Sylvia Fireman  
Mr. and Mrs. Ted Fireman  
Mr. and Mrs. Henry Fisher  
Mr. and Mrs. Patrick Fix  
Michael Flamm and Jennifer McNally  
Dr. and Mrs. Jason Fox  
Linda and Douglas Frank  
William Frasch  
Mr. and Mrs. Bruce Freimark  
Mr. and Mrs. Jim Friedland  
Mr. and Mrs. Chad Friedman  
Mr. and Mrs. Ted Furey  
Zelda Garver  
Mr. and Mrs. Jacob Gelman  
Carole and Nelson Genshaft  
Mr. and Mrs. Irwin Gilbert  
Dr. and Mrs. Ivan Gilbert  
James Ginter  
Mr. and Mrs. Ken Gold  
Mr. and Mrs. William Goldberger  
Harvey Goldenberg and Rosie Kaplan  
Dr. and Mrs. Harry Goldsmith  
Harry Goldstein\*  
Mr. and Mrs. Joel Gordon  
Mr. and Mrs. Jeffrey Grayfer  
Mr. and Mrs. Ernie Grayson  
Avi Greenbaum  
Mr. and Mrs. Ronald Greenbaum  
Lillian Greenberg  
Mr. and Mrs. Jay Greenland  
Mr. and Mrs. Ernie Grindstaff  
Carol Grogan  
Arnold Grossman  
Mr. and Mrs. Jeffrey Grossman  
Inge Guttmann  
Mr. and Mrs. George Hairston  
Mr. and Mrs. Ron Hammel  
Mr. and Mrs. Harvey Handler  
Robb Hardy  
Mr. and Mrs. Donald Harnett

Mr. and Mrs. Wesley Harris  
Mr. and Mrs. Russ Hathaway  
Nancy Heller  
Shannon Hennessy and Peg Prendergast  
Allan Herbst  
Michael Herschler  
Mr. and Mrs. John Hillenbrand  
Mr. and Mrs. Russell Hilles  
Debra and Michael Hirsch  
Pauline Hollander  
Matthew Hooker  
Norman Hosansky and Joyce Wexler  
Hyde Park Restaurant Systems, Inc.  
Ricki Illes  
Patricia Insley  
JoAnn James  
Mr. and Mrs. Lynn Jenkins  
Mr. and Mrs. Jeffrey Judis  
Sarah Kaminski  
Mr. and Mrs. Ira Kane  
Mr. and Mrs. Thomas Kaplin  
Norma and Murray Katcher  
Dora Katz  
Lillian Katz  
Mr. and Mrs. Thomas Katzenmeyer  
Mr. and Mrs. Louis Keil  
Steven Keller and Joyce Garver Keller  
Nancy Kelley  
Mr. and Mrs. Michael Kennedy  
Malvina Khozina  
Dean Knuth and Suzanne Yavorsky  
Mr. and Mrs. Larry Koebel  
Mr. and Mrs. Gary Kogan  
Martin Kopp  
Charles Korn and Deborah Raiken  
Stephen Krass  
Rhonda Lapierre  
Georgia Lawson  
Steven LeClair  
Cheri Leeman  
Dr. and Mrs. Michael Lehv  
Dr. and Mrs. Sanford Leslie  
Dr. Edward Levine  
and Dr. Miriam Freimer  
Linda Levy  
Sally Levy  
Dr. and Mrs. Roy Lewicki  
Mr. and Mrs. Charles Lewis  
Mr. and Mrs. Warren Lewis  
Nick Linn  
Littler Mendelson, P.C.  
Faye Mack  
Gary Madrzykowski  
Mr. and Mrs. Joel Margolies  
Mr. and Mrs. David Margolis  
Anita Marshall  
Cora Martin  
Mr. and Mrs. Reg Martin  
Susanne Martinez  
Sally Matchneer  
Lore May  
Mr. and Mrs. Ron Mayer  
Mr. and Mrs. Patrick McCaffrey

Mr. and Mrs. Francis McCarthy  
Lee McCorkle  
Beverly McDonald  
Mr. and Mrs. Todd McFarland  
Mr. and Mrs. Nelson McRay  
Mr. and Mrs. Thomas Meehan  
Jack Meizlish  
Jean Mellman  
Debbie and Ron Melser  
Mr. and Mrs. Richard Meltzer  
Dr. and Mrs. Jerry Mendell  
Mr. and Mrs. James Mets  
Betty Miller  
Dorinda Miller  
Mr. and Mrs. Gary Miller  
Myrna Miller  
Mr. and Mrs. Paul Miller  
Mr. and Mrs. Harold Mindlin  
Paula Mittman  
Annette Molar  
Mr. and Mrs. Jeffrey Morris  
Vicki Morrison  
Mr. and Mrs. John Moss  
Pauline Newman  
Mr. and Mrs. Alan Norris  
Betty Nowacki  
Helen Nutis  
Rebecca Nye  
John O'Keeffe  
Paula Olson  
Dr. and Mrs. Samuel Osipow  
William Ostrander  
OSU East Radiology  
Dorothy Para\*  
Mr. and Mrs. Phil Parker  
Maxine Parsons  
Mr. and Mrs. Bernie Pasternack  
Pediatric Academic Association, Inc.  
Mr. and Mrs. Edward Pincus  
Mr. and Mrs. A.A.F. Pinto  
Marie Pinto  
Heather Pirrone  
Ann Plasteras  
Jim Pletcher  
Mr. and Mrs. John Popp  
Margaret Pritchard  
Rabbi Crespy's Discretionary Fund,  
Congregation Agudas Achim  
Jack Remy  
Rob Ricer and John Wilson  
Mr. and Mrs. Paul Richards  
Mr. and Mrs. Richard Robbins  
Cordelia Robinson  
Rockford Homes, Inc.  
Dr. and Mrs. Gary Rogers  
Mr. and Mrs. Robert Roper  
Neil Rosenberg  
Mr. and Mrs. Marty Rosenthal  
Dr. Richard Rosenthal  
Mr. and Mrs. Shaun Rotenberg  
Robert and Francine Rothman  
Ruben Community Center  
Mr. and Mrs. Jason Russ

Mr. and Mrs. William Russell  
Rutherford-Corbin Funeral Home  
Lou Saslaw  
Lenore Schottenstein  
Naomi Schottenstein  
Rosalie Schottenstein  
Mr. and Mrs. Ron Schulman  
Irving Schuster  
Mr. and Mrs. Sanford Schwartz  
Mr. and Mrs. Arnold Shapiro  
Florence Shenk  
Mr. and Mrs. Jim Sherman  
Mr. and Mrs. John Sherman  
Ella Shershevsky  
Phyllis Shwartz  
Sanford Siegel  
Mr. and Mrs. Jon Silberstein  
Rowena Siqueira  
Charles and Peggy Sloin  
Mr. and Mrs. Eugene Smith  
Brenda Smith-Young  
Herbert Solomon  
Mr. and Mrs. Ronald Solove  
Marion Soomsky  
Mr. and Mrs. Leon Steinhardt  
Letha Ann Steward  
Mr. and Mrs. Peter Susser  
Neil Swissman  
Adelaide Taub  
The First Bexley Bank

The Refund Group  
Mr. and Mrs. Fred Thompson  
Rosalie Tieman  
Mr. and Mrs. Brian Tierney  
Stuart and Nancy Tishkoff  
Theresa Todd  
Mr. and Mrs. Carl Tretter  
Mr. and Mrs. David Trietsch  
Truro Township  
Tyack, Blackmore & Liston Co., LPA  
Union County Board  
of Developmental Disabilities  
Urantia Association International  
Dr. and Mrs. Robert Verona  
Dallas Von Hessler  
Mr. and Mrs. Chris Washington  
Leslie Wasserstrom  
Ronald Wasserstrom  
Bryna Watson  
Michael Weisbach  
Sharon West  
Marcia Wetherbee  
Judith Wilde  
Mr. and Mrs. Bob Wilkinson  
Mr. and Mrs. Bruce Wilson  
Mr. and Mrs. Jim Wilson  
Mr. and Mrs. Michael Zboray  
Stephanie Zboray  
Ellin Zeisler

*And other anonymous donors*

*\* of blessed memory*

*Gifts listed are from January through December 2011. Every effort is made to properly recognize each donor. If your name has been inadvertently omitted or misspelled, please contact Debbie Melser in the development office at (614) 559-0331 or dmelser@whv.org.*

Visionary	\$500,000 and above
Chair's Circle	\$100,000 - \$499,999
BUILDER	\$50,000 - \$99,999
Founder	\$25,000 - \$49,999
President's Circle	\$10,000 - \$24,999
Leader	\$5,000 - \$9,999
Guardian	\$2,500 - \$4,999
Chai Circle	\$1,800 - \$2,499
Sustainer	\$1,000 - \$1,799
Patron	\$500 - \$999
Contributor	\$250 - \$499
Friend	\$100 - \$249

## In-Kind Contributors

Mr. and Mrs. Garry Beim  
 Beth Jacob Congregation  
 Blumen Garten Florist  
 Michelle Brown  
 Naomi Chodnoff  
 Columbus Jewish Film Festival  
 Crosby's Drugs, Inc.  
 CSC Worldwide  
 Dancor Inc.  
 Florida Tile, Inc.  
 Cheri Green  
 Terri and Ronald Greenbaum  
 Hamilton Parker Company  
 Hilton Columbus at Easton  
 Dr. and Mrs. Marc Hollander  
 Mr. and Mrs. Brad Kastan  
 Bette Katz  
 Mrs. Tom Knox  
 Tudy and Buddy Krupnick  
 L.A. Venneri, Inc.  
 Lorn Spolter Photography  
 Igor Malkiman and Svetlana Golba  
 Mr. and Mrs. Stanley Marmor  
 Debbie and Ron Melser  
 Mary Mentser  
 Mr. and Mrs. Jon Miller  
 Morrison Senior Living  
 My Chauffeur  
 Pagetech Ltd.  
 Parking Solutions, Inc.  
 Mr. and Mrs. Richard Pawliger  
 Sandra Prater  
 Lois Reese\*  
 Paul Rehmar  
 Gayle and David Rosen  
 Mr. and Mrs. Larry Ruben  
 Nataliya Smirnov  
 Mr. and Mrs. Joe Sniderman  
 The Jewish Community Center  
 The Kroger Co. at Town & Country Shopping Center  
 The Ohio Jewish Chronicle  
 The Wasserstrom Foundation  
 Mona Thivener  
 Mr. and Mrs. Larry Willen  
 WOSU Public Media  
 Mr. and Mrs. Craig Wolpert  
 Sidney Wolpert

\* of blessed memory

## Permanent Funds

Auxiliary of Wexner Heritage House Endowment Fund\*  
 Ruth & Irving Barkan Endowment Fund\*  
 Nancy P. Bramlage Endowment Fund\*  
 Myrna & William Brandwein Endowment Fund\*  
 John & Elizabeth Boutselis Endowment Fund  
 Harry, Leah, & Ida Cabakoff Lecture Series Fund\*  
 Christy's Fund of Zusman Hospice  
 Murray & Jill Davis Family Endowment Fund  
 Laura Dworkin Memorial Endowment Fund for Spiritual Life\*  
 Frank Forchheimer Endowment Fund\*  
 Sam Friedman Fund  
 Friends of Shalom House  
 Claire Galan Special Care Activities Fund\*  
 Robert A. Glick Endowment Fund\*  
 Robert A. Glick Jewish Hospice Fund\*  
 Glimcher Family Endowment Fund for Shalom House  
 Martin & Leah Godofsky Fund\*  
 Phoebe Gold Memorial Endowment Fund\*  
 Eva Goldston Memorial Heritage Tower Anniversary Endowment Fund\*  
 Sandy & Bonnie Goldston Endowment Fund  
 Robyn Grossman Memorial Fund for Education at Zusman Hospice  
 Charlotte & Ben Kahn Sensory-Impaired Endowment Fund\*  
 Levy Wheelchair Fund  
 Lewin Family/Hamilton Parker Company Foundation\*  
 Lillie and Henry Lewin Endowment Fund\*  
 Lottie C. Lieberman Endowment Fund  
 Jeff & Debra Meyer Family Endowment Fund  
 Frank & Boots Nutis Fund\*  
 Mollie B. Nutis Linen Shower Endowment Fund\*  
 Roslyn F. Pariser Geriatric Endowment Fund\*  
 Belle Pearson Memorial Scholarship Fund\*  
 Polster Dental/Medical Center Fund  
 Eli Pommer Testamentary Endowment Fund  
 Rabbi Educational Fund  
 Daniel & Anna Robins Family Endowment Fund  
 Stanton & Linda Robins Endowment Fund  
 Lou Robins Endowment Fund\*  
 Al Rosen Art Fund  
 Rosenfeld Family Endowment Fund\*  
 Mildred & George Rosenberger Fund\*  
 Jeanette Rubin Endowment Fund\*  
 Schecter Alzheimer's Fund  
 Sadie Schottenstein Music Fund\*  
 Saul Schottenstein Center for Jewish Life Endowment Fund  
 Shalom House Endowment Fund  
 Morris & Fannie Skilken Family Endowment Fund  
 Betty & Charles Talis Endowment Fund\*  
 Louis & Sadie Thall Memorial Fund  
 Joan Wallick Jewish Hospice Fund\*  
 Joan Wallick WHV Fund\*  
 Harvey P. Weiner Endowment Fund  
 Ruth I. & Abraham B. Weinfeld Endowment Fund\*  
 Bella & Harry Wexner Endowment Fund  
 Leslie & Abigail Wexner Endowment Fund  
 Wexner Heritage House General Endowment Fund  
 WHV Foundation Endowment Fund  
 Dr. Earl Yaillen Endowment Fund\*  
 Zelkowitz Family Foundation: Elliot Weiner & Ruth Kanter Endowment Fund\*

\* of the Columbus Jewish Foundation

# WHV and Affiliates

## Fiscal Year Ending December 31, 2010

### Balance Sheet

	Consolidated
Current Assets	\$2,426,839
Property, Plant & Equipment	25,130,393
Other Assets	5,301,945
<b>Total Assets</b>	<b><u>\$32,859,177</u></b>
Current Liabilities	\$5,413,930
Long-Term Liabilities	23,136,743
<b>Net Assets</b>	<b><u>4,308,504</u></b>
<b>TOTAL LIABILITIES &amp; NET ASSETS</b>	<b><u>\$32,859,177</u></b>

### Income Statement

	Consolidated
Total Operating Revenue	\$27,366,259
Total Operating Expenses	24,405,435
<b>Gross Margin</b>	<b><u>\$2,960,824</u></b>
Depreciation, Amortization & Interest	2,982,654
<b>Gain (Loss) from Operations</b>	<b><u>\$(21,830)</u></b>
Loss on Extinguishment of Debt	(432,364)
Net Unrealized Investment Gain (Loss)	(248,866)
Restricted Contributions	102,538
Restricted Investment Income	(41)
Net Assets Released from Restriction	(89,305)
<b>Increase (Decrease) in Net Assets</b>	<b><u>\$(689,868)</u></b>

**BEXLEY HERITAGE APARTMENTS**  
Subsidized senior housing

**CREEKSIDE AT THE VILLAGE**  
Senior independent & assisted living

**HERITAGE TOWER**  
Subsidized senior housing

**HOME HEALTH & WELLNESS**  
In-home, private duty care

**MODES SCHOTTENSTEIN DIALYSIS PAVILION**  
Dialysis treatment center

**POLSTER MEDICAL CENTER**  
Medical, lab & x-ray services in partnership with OhioHealth

**REHABILITATION CENTER**  
Inpatient short-term, post-hospital rehab

**SHALOM HOUSE, INC.**  
Housing & programming for adults with developmental disabilities

**THE COTTAGE**  
Memory-support assisted living

**WEXNER HERITAGE HOUSE**  
Long-term, skilled nursing care

**WHV INSTITUTE**  
Training, education & research in healthcare

**ZUSMAN HOSPICE**  
Palliative care for those living with a life-limiting illness



**WEXNER HERITAGE VILLAGE**

FAMILY OF SERVICES

1151 College Avenue  
Columbus, Ohio 43209  
(614) 231-4900 | [whv.org](http://whv.org)